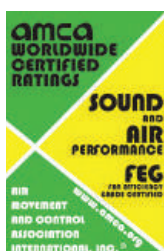
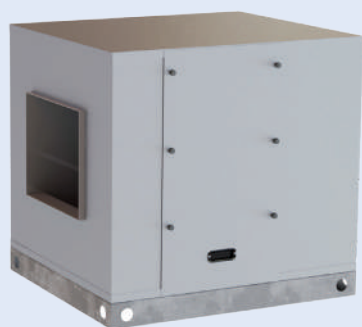


# > BOX-T

Belt Driven Double Inlet Box Fans



Maico Gulf LLC. certifies that the DYNAIR model BOX-T 7/7 to 630 shown herein are licensed to bear the AMCA Seal. The ratings shown are based on tests and procedures performed in accordance with AMCA Publication 211 and AMCA Publication 311 and comply with the requirements of the **AMCA Certified Ratings Program**.

## GENERAL DESCRIPTION

Belt driven centrifugal cabinet fans with special acoustic lining for improved sound radiation control from 175 to 6,000 CMH airflow range.

The low noise level is due to their plenum, lined with acoustic material that allows a remarkable reduction of noise level, inevitably generated by the fan.

Their main characteristic is the low noise level which makes them ideal for urban environments (apartments, houses, bars, restaurants, gymnasiums, offices) and industrial sites where the noise is a problem.

The low noise level is due to their plenum, lined with acoustic material, that allows a remarkable reduction of noise level, inevitably generated by the fan.

The blower consists of a double inlet double width forward curved centrifugal fan with built-in motor.

## CONSTRUCTION

- Profile less cabinet is manufactured in PPGL sheet with removable access panel to allow easy access to fan and motor.
- The blower is fitted using suitable support feet and is completely isolated from the casing by anti-vibration mounts and gaskets.
- Acoustic lining in self-extinguishing techno-polymer.
- Double inlet blower forward curved with direct drive built-in asynchronous motor, single-phase or three-phase, particularly suitable for speed regulation (using the suitable speed regulators shown in this catalogue).
- Flanged inlet and outlet for easy duct work.
- Asynchronous three-phase motors according to international standards IEC 60034, IEC 60072, EMC 2004/108/CE, LVD 2006/95/CE, CE marked, IP 55, class F. Suitable for S1 service (continuous working at constant load).

## ACCESSORIES

- Weatherproof protection cover.
- Support feet.
- Outlet terminal with guard.
- Setting shutter.
- Setting shutter with filtering section (standard version with filter in polyester with efficiency 90.1%, class EU4).

## BEYOND THE STANDARD PRODUCT

- Version with three-phase double polarity motor (4/6 pole).
- Asynchronous mono-phase motors according to international standards IEC 600034, IEC 60072, EMC 2004/108/CE, LVD 2006/95/CE, CE marked, IP 55, class F. Suitable for S1 service (continuous working at constant load).
- Panels in aluminum.
- Double skin panels (available thickness: 25 or 50 mm) any possible in extruded AL profile
- With pre and bag filter.
- Options with backward curved and sizes more than 630 mm.

## DISCHARGE ANGLES

BOX-T

INSPECTION DX	Dx-A1	Dx-A1b	Dx-A2	Dx-A3
INSPECTION SX	Sx-A1	Sx-A1b	Sx-A2	Sx-A3

N.B: Standard discharge angles DX-A1