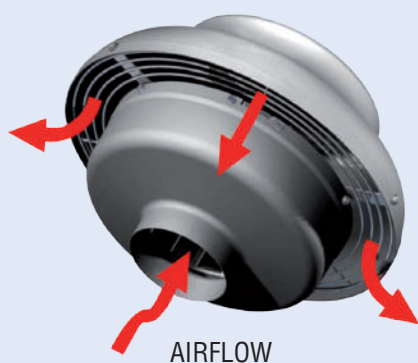
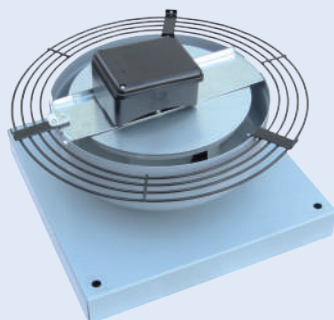
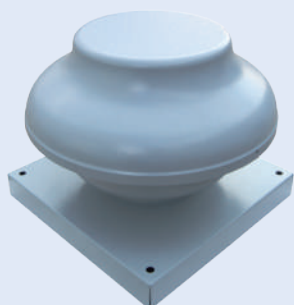


> DRF

Residential Roof Fan



GENERAL DESCRIPTION

DRF is a versatile and robust range of centrifugal roof extract units available in 6 sizes and suitable for vertical and horizontal installation. The protection cowl in highly resistant aluminium is perfectly adapted for exposed areas. DRF compact design and easy installation is made to satisfy the requirements of efficient ventilation in residential, commercial and light industrial applications.

INSTALLATION

- Compact centrifugal roof fan for free or ducted application.
- Horizontal and vertical installation.
- Can be mounted on an exterior wall when roof access is not available.
- Easy solution for a multipoint ventilation need.
- Added benefits of the outdoor installation: free interior space, maximised ventilation and noiseless operation.

MOTOR SPECIFICATION

- Ball bearing motor, permanently lubricated for maintenance-free operation and continuous running.
- Fan and motor assembly balanced for a quiet and vibration-free operation.
- Motor is IP44 protected.

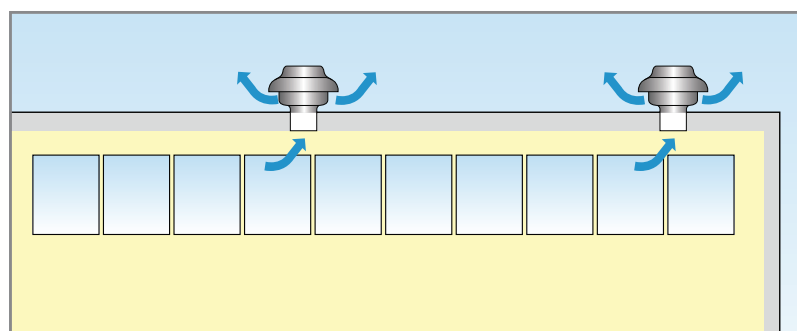
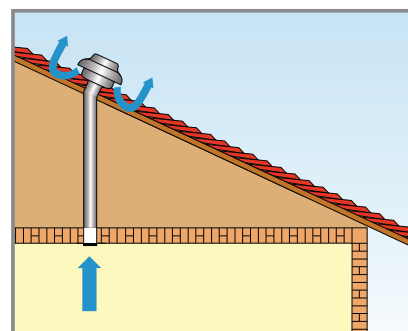
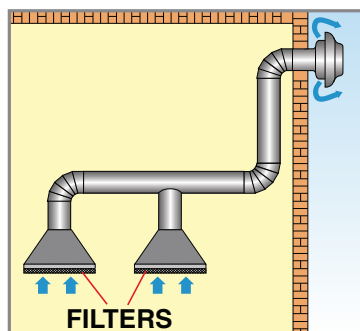
PRODUCT SPECIFICATION

- Available in 6 sizes with performances rating from 264 m³/h to 1444 m³/h (20 to 880 Pa).
- Suitable for clean air temperature from – 30°C up to +60°C.
- Cowl in highly resistant aluminium.
- The cowl is removable for access to the motor and wiring connections.
- Cowl's screws in HDG resistant to atmospheric agents.
- Self-cleaning backward bladed impeller with high efficiency and low noise level.
- Protection guard is electroplated.
- Speed controllable for highly efficient and economical airflow.
- CE marked.
- Comply with EN 60335-2-80, B.T. 2006/95/CE, EMC 2004/108/CE.

OPTION

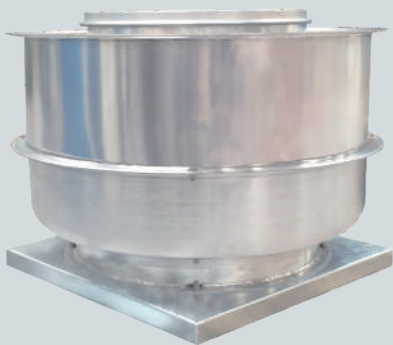
- Speed regulators.

APPLICATIONS



> FCVS

Roof Exhaust Upblast



Maico Gulf certifies that the DYNAIR model FCVS are licensed to bear the AMCA Seal. The ratings shown are based on tests and procedures performed in accordance with AMCA Publication 211 and AMCA Publication 311 and comply with the requirements of the AMCA Certified Ratings Program. Performance certified is for installation type C – Ducted inlet, Free outlet. Power rating (watts, kW, or BHP) includes transmission losses. Performance ratings do not include the effects of appurtenances (accessories).

GENERAL DESCRIPTION

FCVS -D (Direct drive) and FCVS-B (Belt drive) fans are ideal for general purpose exhaust applications including bathrooms, garages, general kitchen areas, offices, churches, dormitories, factories, large warehouses and other relatively clean air applications.

They feature a weather-resistant, seamless spun aluminum housing which works in conjunction with special wheel design and deeply spun inlets to provide smooth and quiet airflow through the ventilator.

Wheels are backward inclined centrifugal curved for higher efficiency and quieter operation.

Certified performance in accordance with AMCA 210 and 300.

CONSTRUCTION (DIRECT DRIVE)

- Base frame made from sheet steel in HDG.
- Backward curved wheel in aluminum / cold rolled sheet steel.
- Motor: Asynchronous single / three-phase TEFC motor manufactured according to IEC standard. Suitable for 60 Hz supply.

CONSTRUCTION (BELT DRIVE)

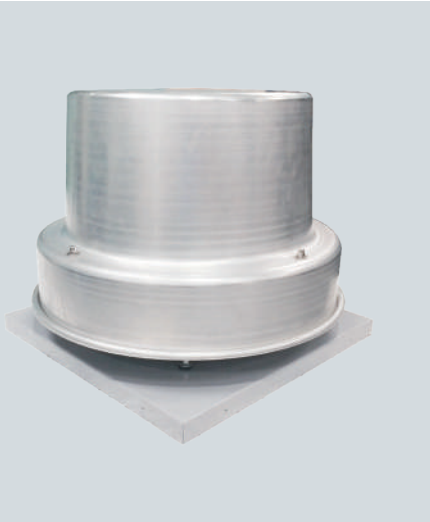
- Belts and Drives: Belts shall be oil and heat resistant. Drives shall be precision machined cast iron type, keyed and securely attached to the wheel and motor shafts.
- Self-Aligning Bearings: Heavy-duty bearings are sized for a minimum L50 life in excess of 200,000 hours of operation. 100% factory tested, they are designed for air handling applications.

ACCESSORIES (UPON REQUEST)

- Gravity shutter
- On/Off switch
- Liquidtight conduit
- Grease collector



Roof Exhaust Downblast



Maico Gulf certifies that the DYNAIR model FCS are licensed to bear the AMCA Seal. The ratings shown are based on tests and procedures performed in accordance with AMCA Publication 211 and AMCA Publication 311 and comply with the requirements of the AMCA Certified Ratings Program. Performance certified is for installation type C – Ducted inlet, Free outlet. Power rating (watts, kW, or BHP) includes transmission losses. Performance ratings do not include the effects of appurtenances (accessories).

GENERAL DESCRIPTION

FCS -D (Direct drive) and FCS-B (Belt drive) fans are ideal for general purpose exhaust applications including bathrooms, garages, general kitchen areas, offices, churches, dormitories, factories, large warehouses and other relatively clean air applications.

They feature a weather-resistant, seamless spun aluminum housing which works in conjunction with special wheel design and deeply spun inlets to provide smooth and quiet airflow through the ventilator.

Wheels are backward inclined centrifugal curved for higher efficiency and quieter operation.

CONSTRUCTION (DIRECT DRIVE)

- Base frame made from sheet steel in HDG.
- Backward curved wheel in aluminum / cold rolled sheet steel.
- Motor: Asynchronous single / three-phase TEFC motor manufactured according to IEC standard. Suitable for 60 Hz supply.

CONSTRUCTION (BELT DRIVE)

- Belts and Drives: Belts shall be oil and heat resistant. Drives shall be precision machined cast iron type, keyed and securely attached to the wheel and motor shafts.
- Self-Aligning Bearings: Heavy-duty bearings are sized for a minimum L50 life in excess of 200,000 hours of operation. 100% factory tested, they are designed for air handling applications.

ACCESSORIES

- Gravity shutter
- On/ Off switch